

Corporate Brochure

100 Years of Magnetic Innovation



Reykjavík, Iceland

The shape of the Earth's magnetic field creates two auroral ovals above the North and South Magnetic Poles





Providing Competitive Edge with Magnetic Technology

Introduction

Founded
in 1914



Eclipse Magnetics is one of the world's most experienced and recognisable magnet brands.



We provide magnetic solutions to all major industry sectors, delivering profit, productivity, protection, and compliance. Supplying diverse ranges of magnetic products through various channels, including international industrial catalogues, wholesalers, merchants, representatives and agents.

Benefiting from five differently skilled and dedicated sales teams, each with their own specialism enables us to manage and deliver multimillion pound projects and supply contracts, often to tight deadlines.

Supplying some of the world's most prestigious brands within the Automotive, Aerospace, Manufacturing, Processing, Oil & Gas and Heating & Ventilation sectors across more than one hundred countries, all supported by our global employees and offices.

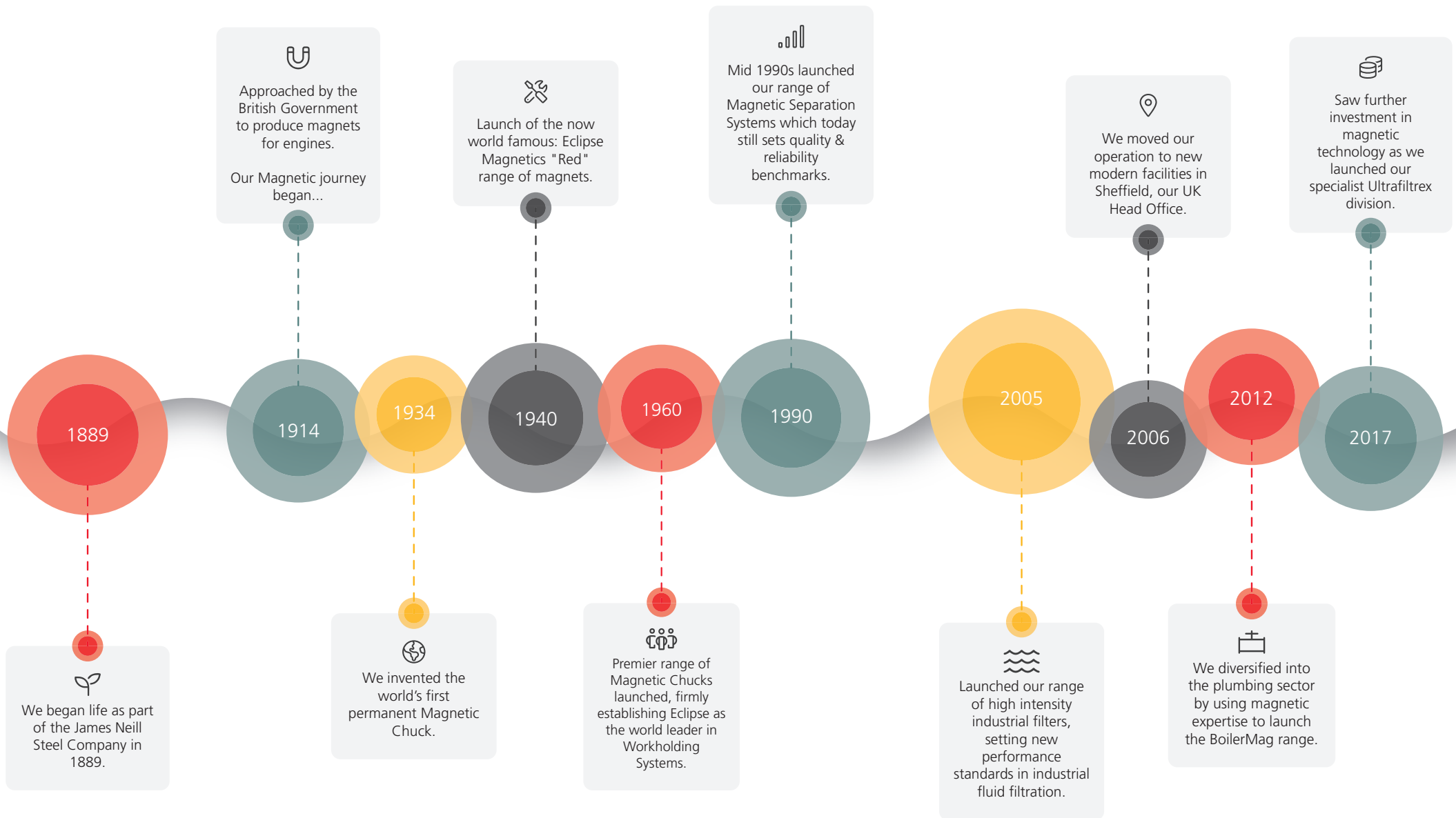
Holding various ISO accreditations, and in conjunction with benefiting from our own design engineering capabilities, we are ideally placed to offer standard and bespoke solutions into the most demanding of applications and industry sectors.

We're committed to the environment and have a road map to reach Net Zero by 2040. We value all employees and are accredited to the Living Wage Foundation.

Contact us and we'll highlight what we can offer you.



Our Journey



Global Reach



 Sheffield, UK Head Office

Our products enjoy an unrivalled reputation for quality and performance.

With truly international reach and a globally recognised magnetic brand spanning over 100+ countries and an unrivalled global distribution network.

Corporate Social Responsibility

Dignity at work policy



Anti-slavery &
human trafficking
policy



Anti-bribery &
anti-corruption policy



Equality & diversity
policy



Harassment &
bullying policy



We're committed to protecting the well-being of our employees and the integrity of over 100 years' history and heritage of the Eclipse Magnetics brand. To reinforce this message, we have developed several policy statements aimed at promoting mutual respect, high standards of conduct and business ethics.

“We recognise the need to protect the environment, act responsibly and within a moral and legal framework.”

The Eclipse Magnetics Difference



Group buying power for raw materials.



Standard or made to order products (application specific).



Flexible approach for requirements from one off to multiple quantities.



Large stock holding / warehousing capability.



Multiple in-house testing facilities from factory to warehouse.



Scheduling orders for call-off (JIT).



Bespoke UK centric Technical and Engineering teams.



Experienced staff with in-depth knowledge of material compositions.



Sector-wide application and industry experience.



Full in-house manufacturing facilities.

Developing Our Employees

At Eclipse Magnetics we constantly recognise that our success has been built by the hard work, talent, and ingenuity of our employees. We invest in our employees and strive to make Eclipse Magnetics an engaging and attractive place to work. We offer a range of employee benefits:

- Company sponsored learning and development - training courses, further education and vocational training
- Promoting health & well-being
- Modern working environment
- Hybrid or flexible working packages
- A range of social and charitable fund raising initiatives
- 24 hour Employee Assistance Programme (EAP)
- Life Assurance Scheme
- Workplace Pension Scheme
- Annual company paid & supported volunteer days
- Bike2Work Scheme



Vision & Values

OUR MISSION IS TO DO THE RIGHT THING

Our Overall Vision

“Empower each employee to contribute towards establishing the Eclipse Magnetics brand and product ranges as ‘Best in Class’ and provide solutions delivered with pride, originality, and authenticity. Work everyday to improve the environment through harnessing the free energy that permanent magnetic technology offers and foster a sustainable future, whilst ensuring we remain relevant to our customers and distribution partners”.

We have strong principles which guide the development of our business, we continually strive to "Do the Right Thing" for the business, our clients, our employees and the wider world.



We work collaboratively towards a common purpose and shared goals.



We act professionally and with integrity with each other, and our customers.



We treat each other with respect and dignity and live our values.



We embrace change & innovation to help customers, colleagues and ourselves.



We always strive to do the right thing.

Living Wage



Eclipse Magnetics is delighted to announce that it has received accreditation as a Real Living Wage Employer by the Living Wage Foundation. This reflects the company's commitment to providing fair pay and improving the lives of its employees.

Why is Eclipse Magnetics committed to the Real Living Wage?

We are committed to providing a fair and living wage for all employees. We believe that our staff are the backbone of our business, so we want to ensure they receive a salary that reflects the cost of living in the UK today.



Plastics



Not only are we committed to achieving our Net Zero target we are also committed to removing all plastic packaging and single use plastics by 2025. This will see over 1 million pieces of plastic removed from our supply chain ensuring we don't harm or impact our local and global environment.



Made in Britain



We're proud of our membership of 'Made in Britain' which represents the quality of our product range. Whilst not all our products are manufactured in the UK we are actively reshoring as much as possible.



Multi-Sector Offering

Our products are utilised in various applications across many industry sectors, such as:



Diverse Range

There are four distinct business areas, each supported by a dedicated and experienced sales and technical team:

Magnetics Materials & Assemblies (MMA)

This area includes our world famous 'Heritage' red range of products that is recognised globally. We also supply various magnetic materials and assemblies into safety critical applications and specialise in high volume OEM supply.

Magnetic Technologies

Encompassing Foreign Body Removal and Industrial Filtration technology. We supply patented products into the food and manufacturing industries with a major focus on process quality control and improving manufacturing efficiencies.

Heating & Ventilation

Supplied through a global merchant network, our BoilerMag range of filtration and water treatment products ensures any size of heating system whether domestic, commercial, or large industrial is fully protected from damaging corrosion.

Oil & Gas

Our main product offering is the unique Ultrafiltrex separator that is designed to remove significant quantities of 'Black Powder' from large scale oil, gas & petrochemical processing facilities, resulting in the significant reduction of single use filter cartridges.

Net Zero

Baseline Emissions

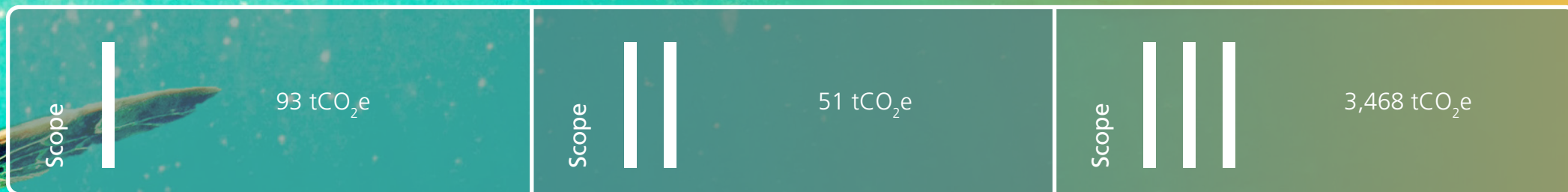


Eclipse Magnetics first calculated its full Scope 1, 2 and 3 greenhouse gas emissions (GHG) inventory for October 2020 - September 2021.

This will be used as the baseline for future emission reduction targets.



Our Scope



Our Emission Reduction Targets

The UK government has set a target for the UK to achieve Net Zero emissions by 2050. Therefore a Net Zero 2050 target is the minimum ambition required for all UK businesses. Eclipse Magnetics is aiming to be more ambitious than this target, demonstrating climate leadership and gaining an advantage over competitors.

Target Type	Emission Scope/s	Target Year	Emission Reduction Target (%)
Net Zero	Scope 1 + 2 (market based)	2030	90%
Interim	Scope 3	2030	43%
Net Zero	All Scopes	2040	90%



Our Capability

“

With its high-strength magnets and overall high quality, the Pneumag is the top choice for applications within all sectors of the food industry that deal with powdered products such as sugar, flour and cocoa. It's easy to clean and the service and technical knowledge from Eclipse Magnetics are second-to-none. We initially chose to work with their products upon a recommendation and we are certainly pleased to have done so. The excellent results of the Pneumag speak for themselves.

”

Steve Musk, Steve Musk Engineering

Design Excellence



A committed in-house design and engineering team utilises the very latest in 3D design, finite element analysis (FEA), Computational Flow Dynamics (CFD) & Magnetic Flux Design software packages to ensure our products perform at the very highest level and specification.

Potential customers can benefit from our team evaluating your existing magnetic products and making recommendations to improve performance and reduce cost. Whether your requirement relates to basic magnetic material or, a more complex full turnkey project solution we're able to help.



Testing Facilities



Whether it's a basic hysteresis report for magnetic material or, pre-installation simulation checks are required for a nuclear handling device, Eclipse Magnetics has a range of testing equipment to prove the function and suitability of all product ranges prior to supply.



Application Know-how



Application knowledge is one of many things that sets us apart from our competitors and enables us to often find solutions to otherwise almost impossible challenges. We benefit from over 100 years of experience and the diverse industry sectors we supply.



Our Capability

Approvals:

We're able to supply various products that can be certified or comply to the following requirements:

- ATEX - Certified for use in an explosive atmosphere
- EHEDG - Hygienically designed equipment for use in the food industry
- PPAP/PSW - Enhanced product quality approval, typically for the automotive industry
- FAIR - Aerospace quality requirements
- CMC - Conflict mineral compliance





“

We were delighted with the service provided by Eclipse Magnetics; from the initial site survey through to delivery. As our pipelines are angled, the units supplied by Eclipse provide the perfect solution to replace the existing magnets. Our operatives have commented on how much easier these new units are to clean and inspect each week.

Production Supervisor, AB MAURI UK & Ireland

”

Product Examples

Filtration
Automag Skid



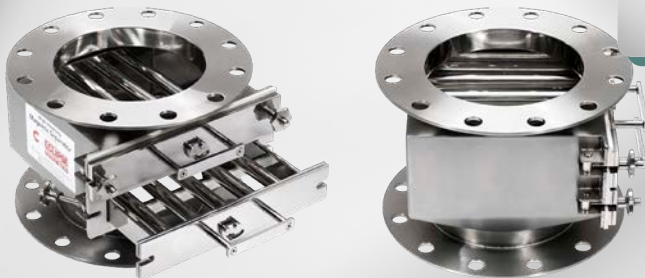
Filtration
Micromag Filters



Heritage
Pot Magnets & Custom
Magnets



Separation
Housed Grid Units



BoilerMag
Industrial Filters





Magnetic Innovations At Our Core

📍 Anak Krakatau, Indonesia





Atlas Way, Sheffield, S4 7QQ, England



eclipsemagnetics.com



+44 (0)114 225 0600

